



**Tiki3D**  
Reality Capturing & Beyond

# Tiki3D

## Real 3D Modeling Software

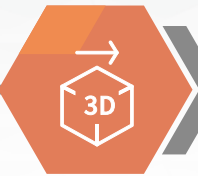
- Tiki3D Real 3D Modeling Master
- Tiki3D 3DGS – Gaussian Splatting
- Tiki3D Advanced Toolkit – Data Management Software
- Tiki3D Editor



## Tiki3D Reality 3D Modeling Software | Features



User friendly  
interface and  
workflow



Powerful  
Aerotriangulation  
algorithm



Comprehensive  
Support for all  
data sources



Built-in model  
refinement tools



Complete Model  
production  
workflow



Self-developed  
solution, highly  
customizable.



Scan the QR code to log in to the website  
[www.tiki3d.com](http://www.tiki3d.com)



WhatsApp/Mobile: +86 186 2121 8688



[sales@tiki3d.com](mailto:sales@tiki3d.com)

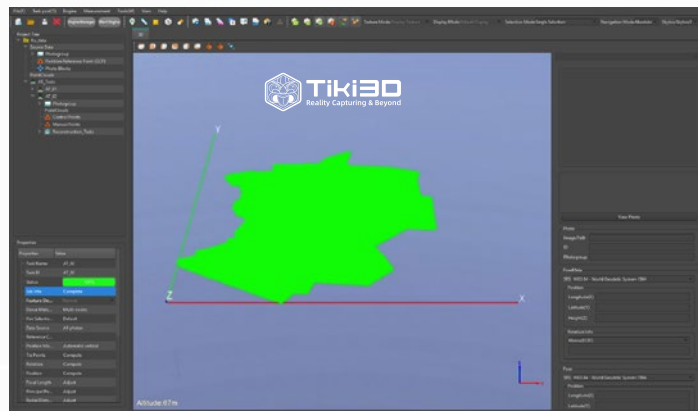
## **Tiki3D** Unlimited Aerotriangulation

### Capacity Mode - Upgraded

- 6-node TWSmini Workstation
- 64GB RAM
- 640,000 images
- Duration: 52 hours
- Bundle Adjustment 23 hours

### • Test Data Features

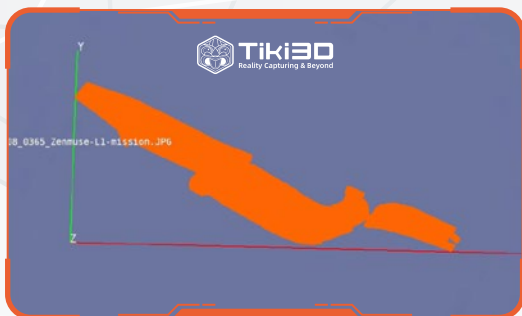
- Island at River Delta
- Vegetation coverage, tidal flats
- Single-lens, weak-texture, reflective surfaces
- 66,000 photos, ~55 km<sup>2</sup>, no GCPs



Survey area filled with vegetation and plains



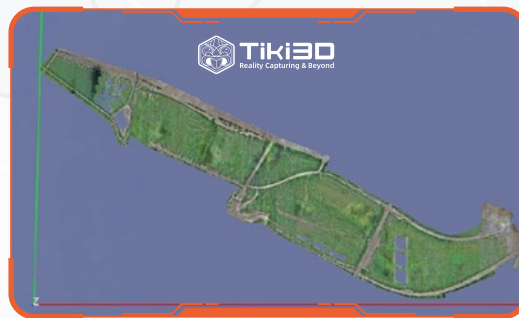
No GCP, large data volume, weak feature texture



Data Acquired



Complete coverage



Clear textures

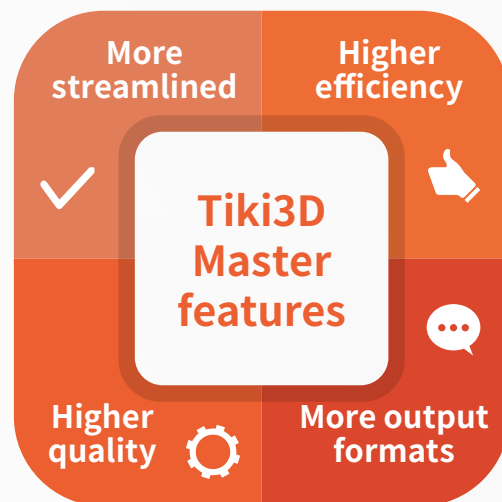




## **Tiki3D Reality 3D Modeling Master**

A simplified one-click reality 3D modeling software specially designed for fast, high-precision modeling tasks.

- Minimalist UI with one-click processing (AT + 3D Reconstruction + 2D Reconstruction), suitable for both professionals and non-professionals.
- High-efficiency modeling with >5 times speed boost meets rapid standalone computer processing needs. **New dense matching algorithm** and **CUDA-optimized workflow** dramatically improve processing efficiency.
- High-quality 3D models with intelligent color adjustment algorithm ensures color consistency.
- Premium true orthophotos with differential correction minimize vegetation "waxing" and jagged building edge.
- Multiple output formats: 3D models (OSGB/3DTile/OBJ/LAS), 2D orthophotos (DOM), DSMs and DEMs.

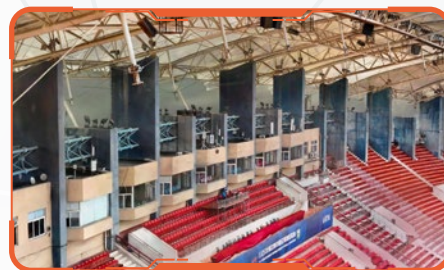


## **Tiki3D TikiSplat -**

### Advanced 3D Production Driven by Gaussian Splatting Techniques

- The newly unveiled Tiki3D TikiSplat module features highly efficient, accurate, and realistic scene generation capabilities, achieving high rendering speeds while preserving fine details and complex lighting effects, with broad application potential.
- Generate hyper-realistic, expansive 3D environments.
- Bring immersive experiences to life across platforms and screens.
- Rapidly produce lifelike large-scale virtual worlds.

### Case Study



Scan the QR code to log in to the website  
[www.tiki3d.com](http://www.tiki3d.com)

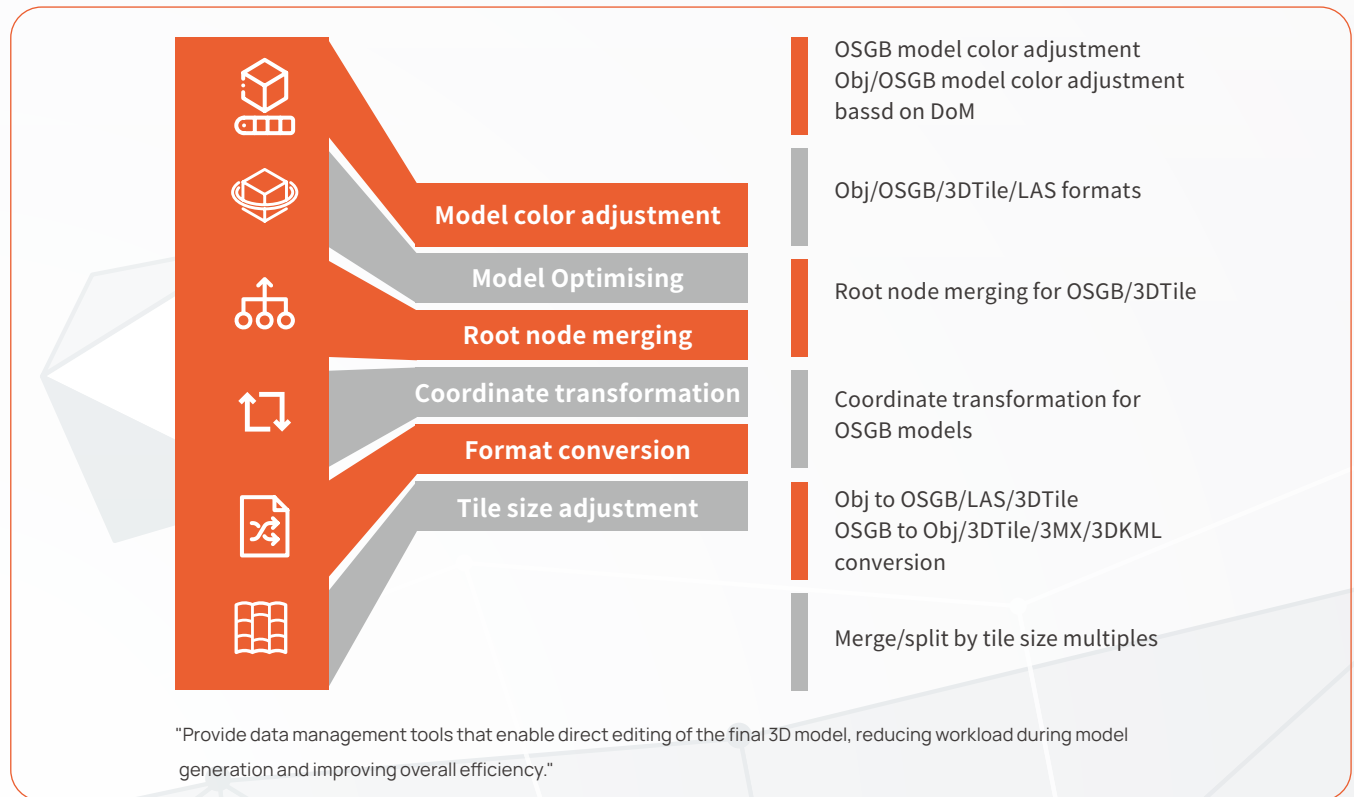


WhatsApp/Mobile: +86 186 2121 8688



[sales@tiki3d.com](mailto:sales@tiki3d.com)

## Tiki3D Advanced Toolkit - Data Processing Features



Tiki3D's Advanced Toolkit is a versatile tool that gives user a range of options such as coordinate transformation, format conversion, root node merging, tile size adjustment, model optimization and model color adjustment.

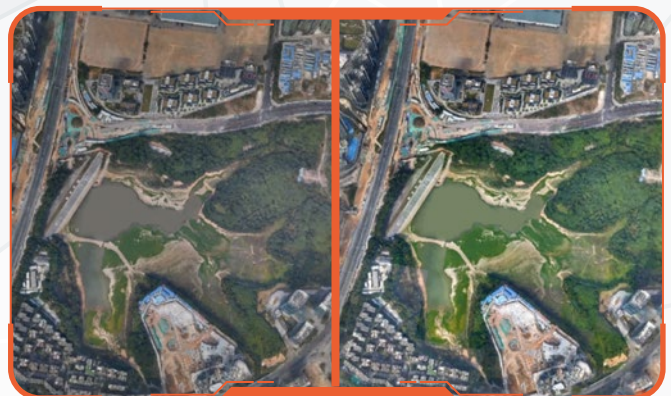
### • Advanced Toolkit Features

- New Model Optimisation algorithm reduces size by up to 70% while maintaining structural integrity.
- Color Adjustment based on model/DOM color.



Original

Optimised Mesh



Before color adjustment

After color adjustment



Scan the QR code to log in to the website  
[www.tiki3d.com](http://www.tiki3d.com)



5/F, Efficiency House, 35 Tai Yau Street, San Po Kong, Kowloon, Hong Kong